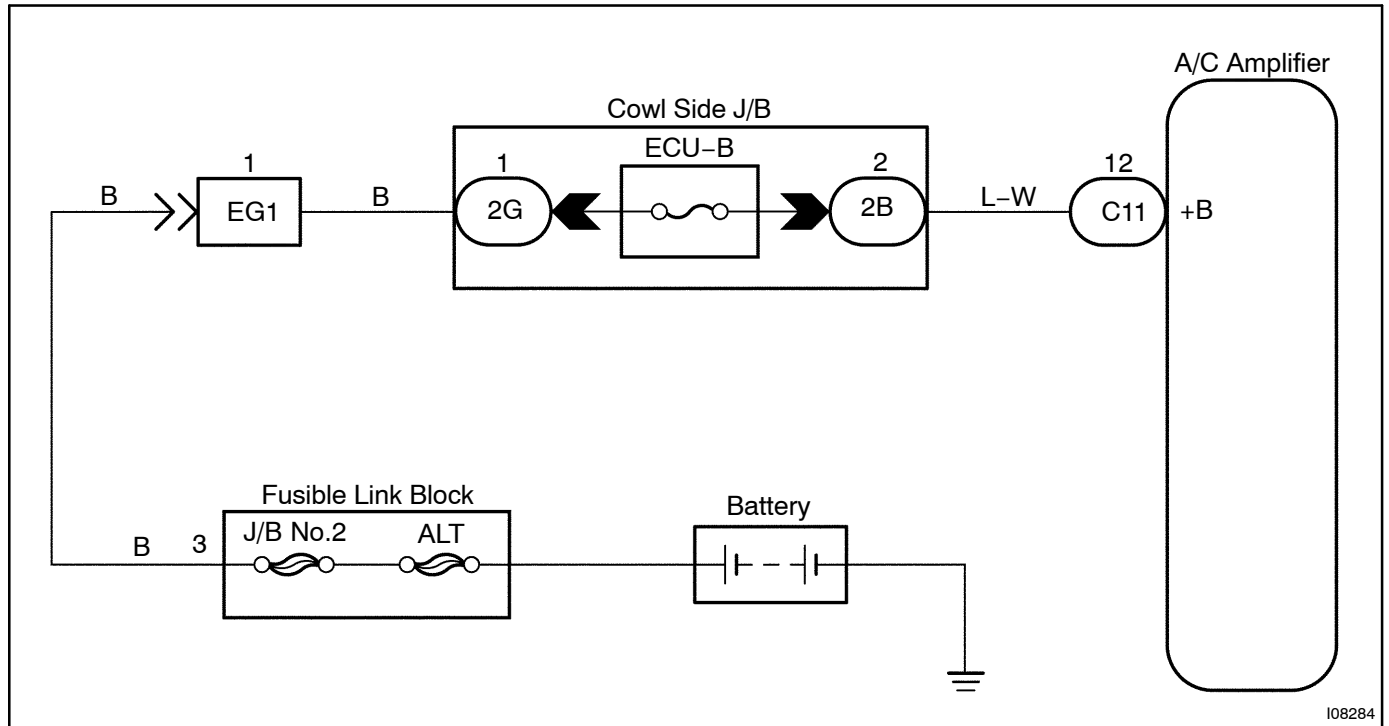


Back Up Power Source Circuit

CIRCUIT DESCRIPTION

This is the back up power source for the A/C control assembly. Power is supplied even when the ignition switch is off and is used for diagnostic trouble code memory, etc.

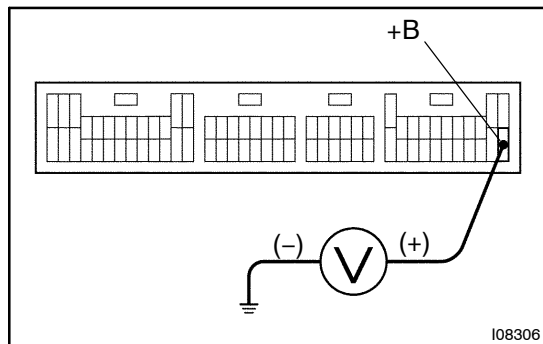
WIRING DIAGRAM



I08284

INSPECTION PROCEDURE

- | | |
|----------|---|
| 1 | Check voltage between terminal +B of A/C amplifier assembly connector and body ground. |
|----------|---|

**PREPARATION:**

Remove the A/C amplifier with connector still connected.

CHECK:

Measure voltage between terminal +B of A/C amplifier connector and body ground.

OK:

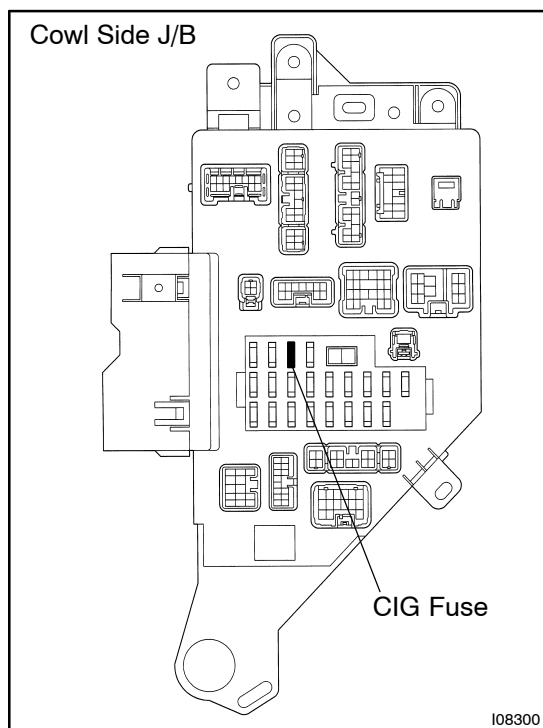
Voltage : Battery positive voltage

OK

Proceed to next circuit inspection shown on problem symptoms table (See page [DI-777](#)).

NG

- | | |
|----------|------------------------|
| 2 | Check CIG fuse. |
|----------|------------------------|

**PREPARATION:**

Remove CIG fuse from cowl side J/B.

CHECK:

Check continuity of CIG fuse.

OK:

Continuity

NG

Check for short in all the harness and components connected to the CIG fuse (See attached wiring diagram).

OK

Check and repair harness and connector between A/C amplifier.